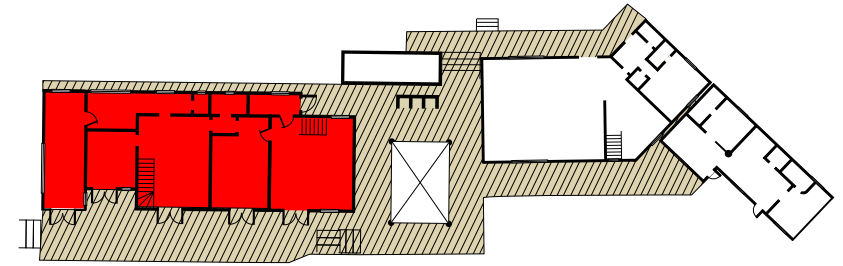


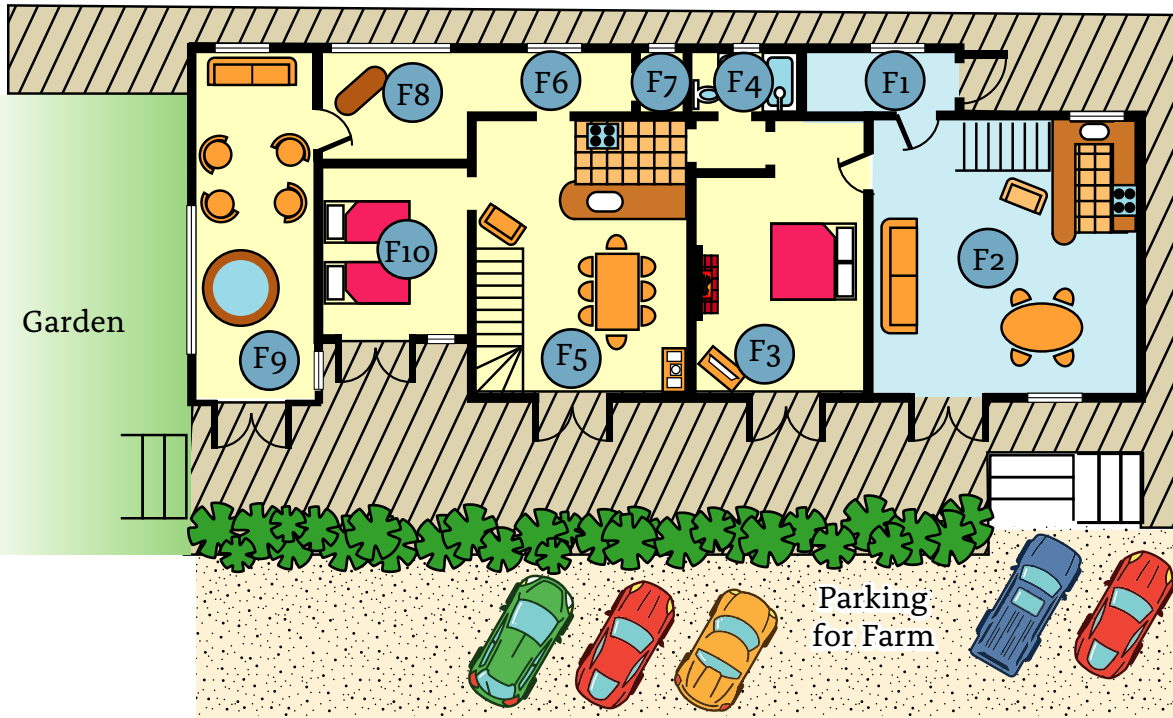


HARTPIECE
Welcoming guests since 2000

Hartpiece Farm *Floor Plan*



Ground Floor



WI-FI available

Key:



West Wing Area

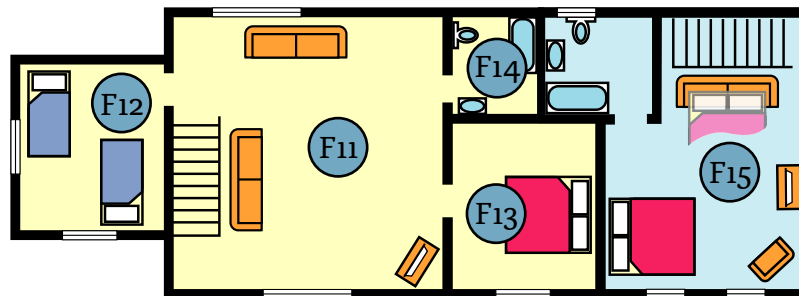
East Wing Area

Ground Floor

- F1. Foyer, East Wing and main door to Farm
- F2. East Wing open-plan kitchen/diner seating 4, TV
- F3. Rose Room with kingside bed, TV and log fire
- F4. Shower bathroom for Rose Room (3) and Eastern Promise Room (10)
- F5. West Wing kitchen/diner seating 8; stereo system
- F6. Tack Room (large porch for stowing gear) with full-size fridge/freezer
- F7. WC
- F8. Cocktail bar area
- F9. Hot tub (6'/180 cm wooden tub, 4'/120cm deep) seating for up to 12. *Only available to guests booking Hartpiece Farm or the whole site*
- F10. Eastern Promise Bedroom with twin beds

First Floor

- F11. Upstairs Rec Room with sofas, TV and DVD
- F12. Baba Yaga (Russian Fairy Tale) Bedroom with twin beds
- F13. Honeysuckle Room with kingsize bed
- F14. Family bathroom with full size bath
- F15. Blue Room with kingsize bed, double sofa bed, full en-suite bathroom and TV



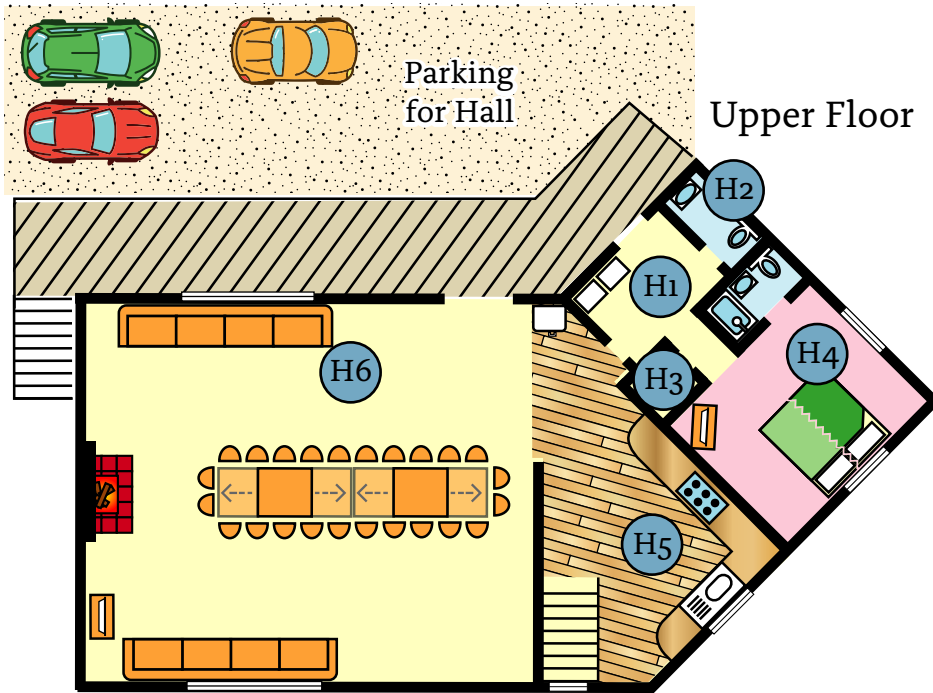
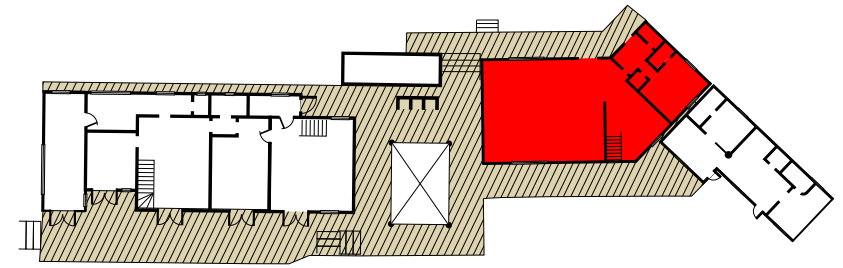
First Floor



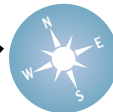
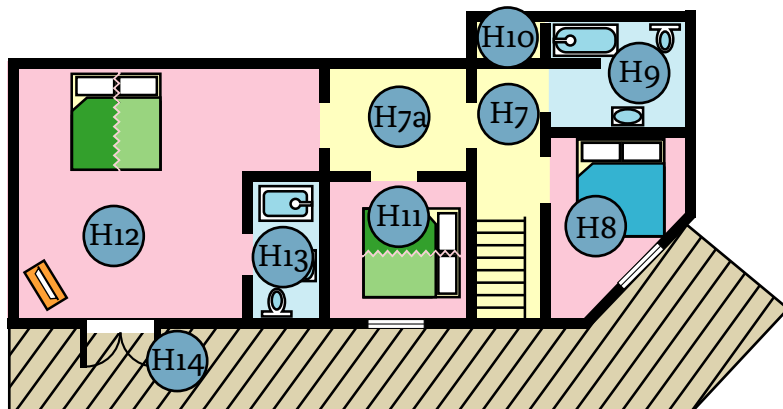


HARTPIECE
Welcoming guests since 2000

Hartpiece Hall *Floor Plan*



Upper Floor



WI-FI available

Key:

Upper Floor

- H1. Foyer with washing machine
- H2. WC
- H3. Storage for extra chairs and cleaning
- H4. Mauretania suite with en-suite shower room and extra-large kingsize zip-and link bed offered as 1 large or 2 twins (6'6" x 6'6"/2m x 2m or 3'3" x 6'6"/1m x 2m twins)
- H5. Open-plan kitchen with Range cooker with gas griddle and burners and double electric ovens
- H6. Flexible dining / lounge area with log fireplace, TV and extendable tables seating up to 22

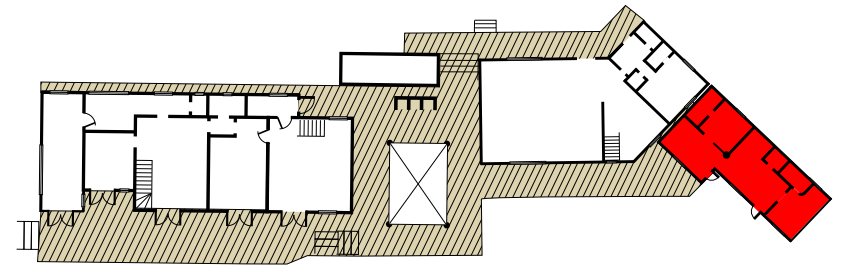
Lower Floor

- H7. Landing
- H7a. Dressing room for Explorer Bedroom (11) can be closed off for privacy
- H8. Lilac Room with kingsize bed
- H9. Family bathroom with full-size shower/bath
- H10. Airing cupboard
- H11. Explorer Room, with kingsize zip and link, usually made up as 3'3" x 6'6"/ 1m x 2m twins but can be made up as large double
- H12. Lamplighter Bedroom with kingsize zip and link bed, can be configured as twin or double bed, TV, optional crib
- H13. En-suite shower bathroom
- H14. Double doors leading to patio, marquee, the Farm and Tappen



HARTPIECE
Welcoming guests since 2000

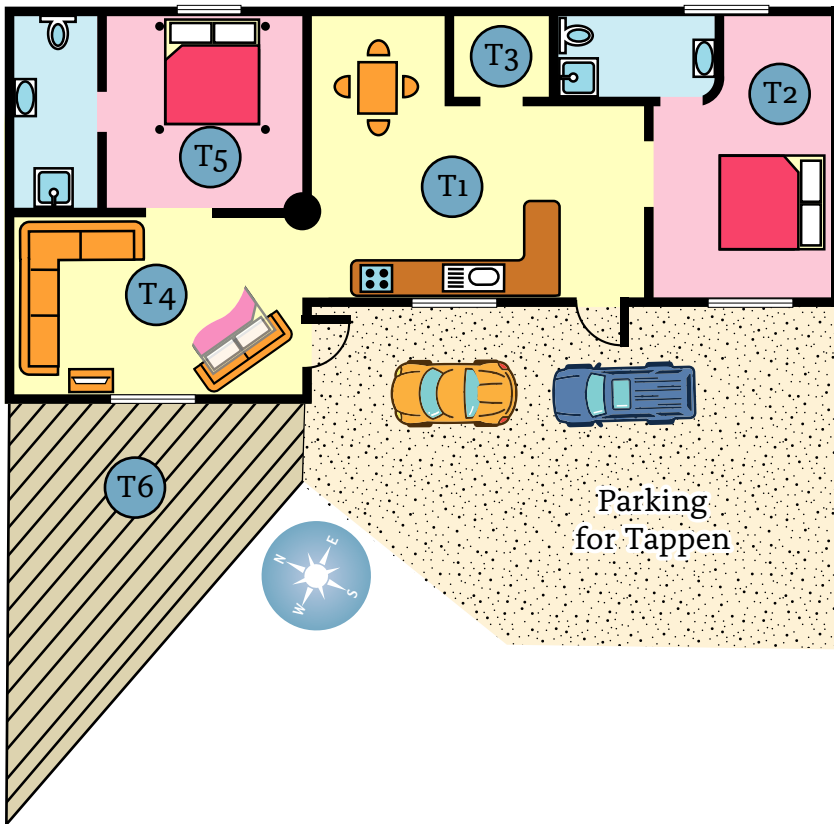
Tappen Floor Plan



WI-FI available

Key:

- T1. Kitchen and chandeliered dining area
- T2. Calke Suite with kingsize bed and en-suite wet room
- T3. Broom cupboard and services
- T4. Living room with corner sofa, sofa bed and TV
- T5. Tallow Suite with 4-poster kingsize bed and en-suite wet room
- T6. Raised balcony



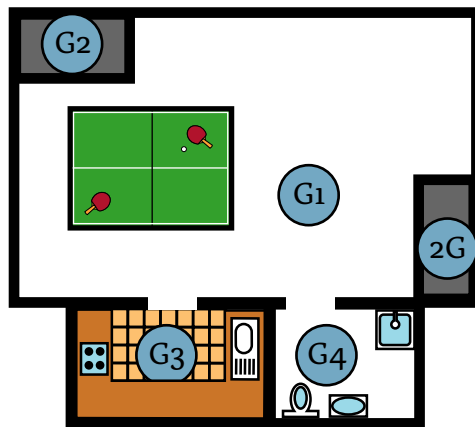


HARTPIECE
Welcoming guests since 2000

Games Room, Hot Tub *and* Sauna

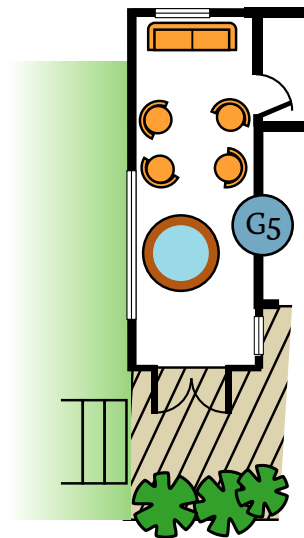
Games Room

- G1. Main room with table tennis table
- G2. Services (private)
- G3. Kitchenette
- G4. Wet room shower/bathroom



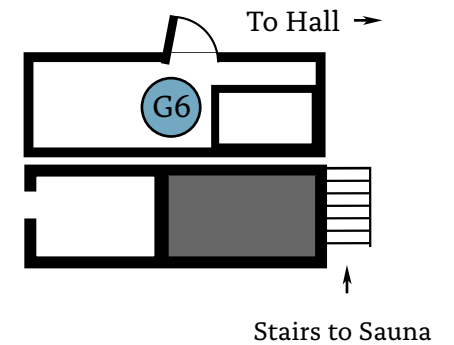
Hot Tub

- G5. Hot tub area with 7' hot tub, seating for up to 12
Only available to guests booking Hartpiece Farm or the whole site.



Sauna

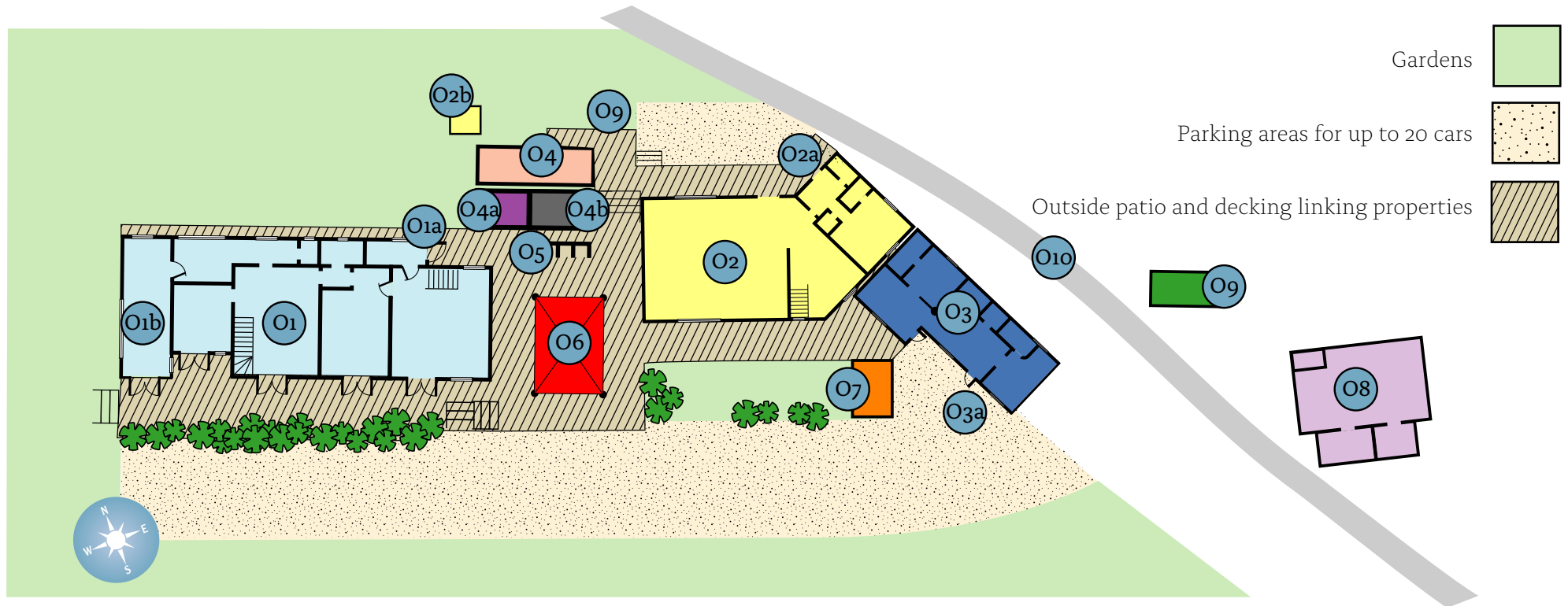
- G6. Finnish sauna seats four to eight comfortably





HARTPIECE
Welcoming guests since 2000

Site Overview *and* Outside Areas



Key:

- | | | |
|---|--|---|
| O1. Hartpiece Farm | O3. Tappen | O7. The Carpenter Shed (<i>private</i>). Storage for additional chairs, high chairs etc |
| O1a. Main entrance to Farm | O3a. Main entrance to Tappen | O8. Games Room with table tennis table Kitchenette and wet room shower/bathroom |
| O1b. Hot tub room | O4. Finnish Sauna <i>fits four to eight</i> | O9. Bins and recycling area |
| O2. Hartpiece Hall | O4a. Laundry Room with washer and dryer | O10. No Through Road, vehicle access to Southhill and Barn only |
| O2a. Main entrance to Hall | O4b. Services (<i>private</i>) | |
| O2b. Log Store <i>for fireplace in Hall</i> | O5. Brick BBQ with kettle and grill, requires briquets | |
| | O6. Outdoor Marquee (<i>seats 22</i>) | |